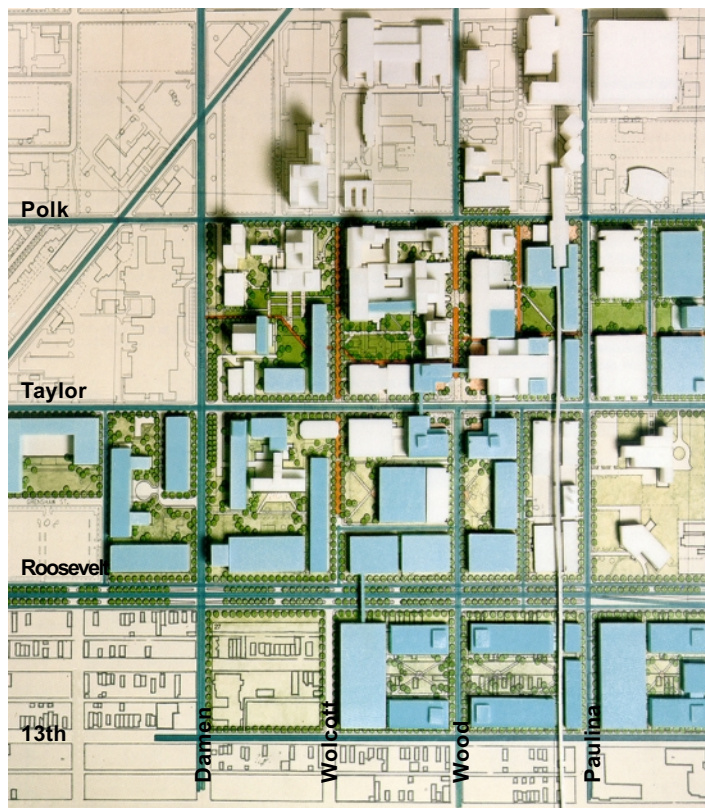
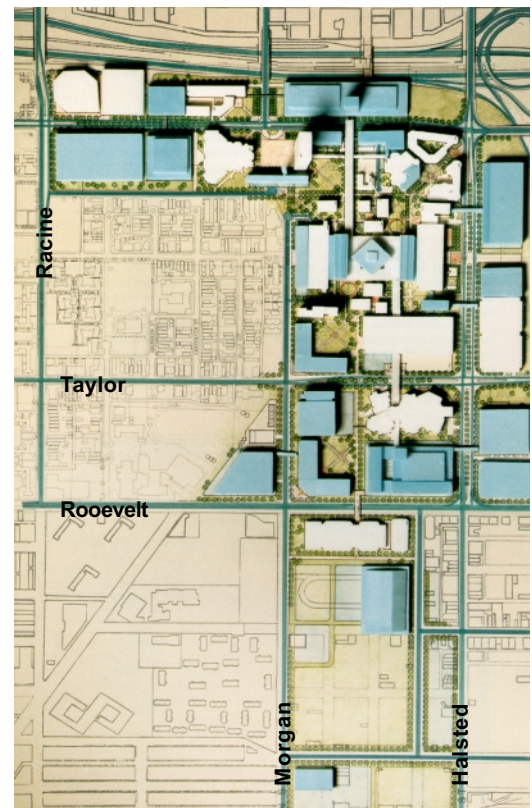


In May 1990, the Board approved the Chicago Campus Master Plan as a general guideline for the long-term growth and development of the Chicago campus. The plan provides a physical framework for the growth of the campus within which both near- and long-term capital improvement projects can be accommodated. It also serves as a guide for the location of future buildings as well as landscaping, parking, and circulation patterns.

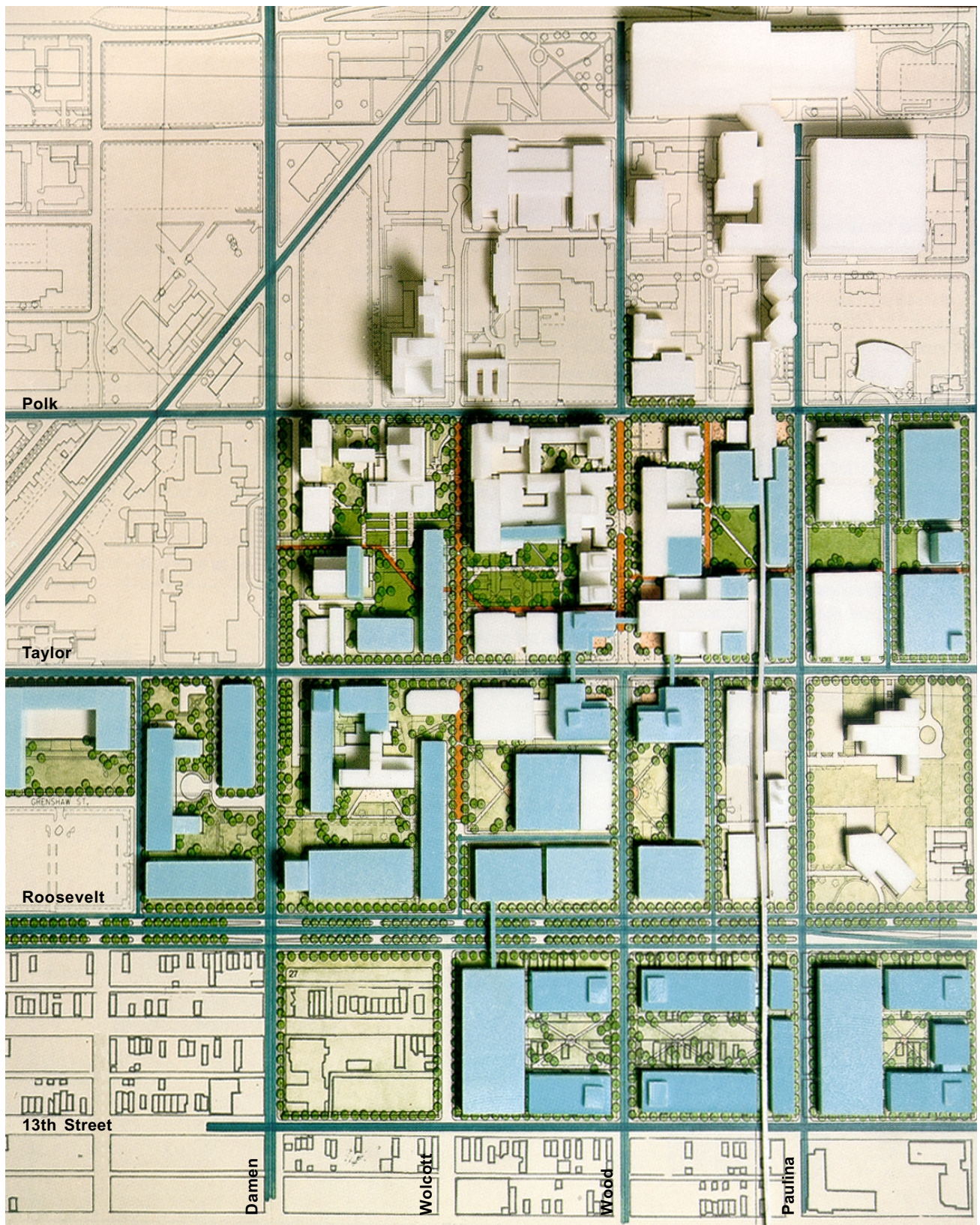
Consultant: Johnson, Johnson and Roy, Inc.

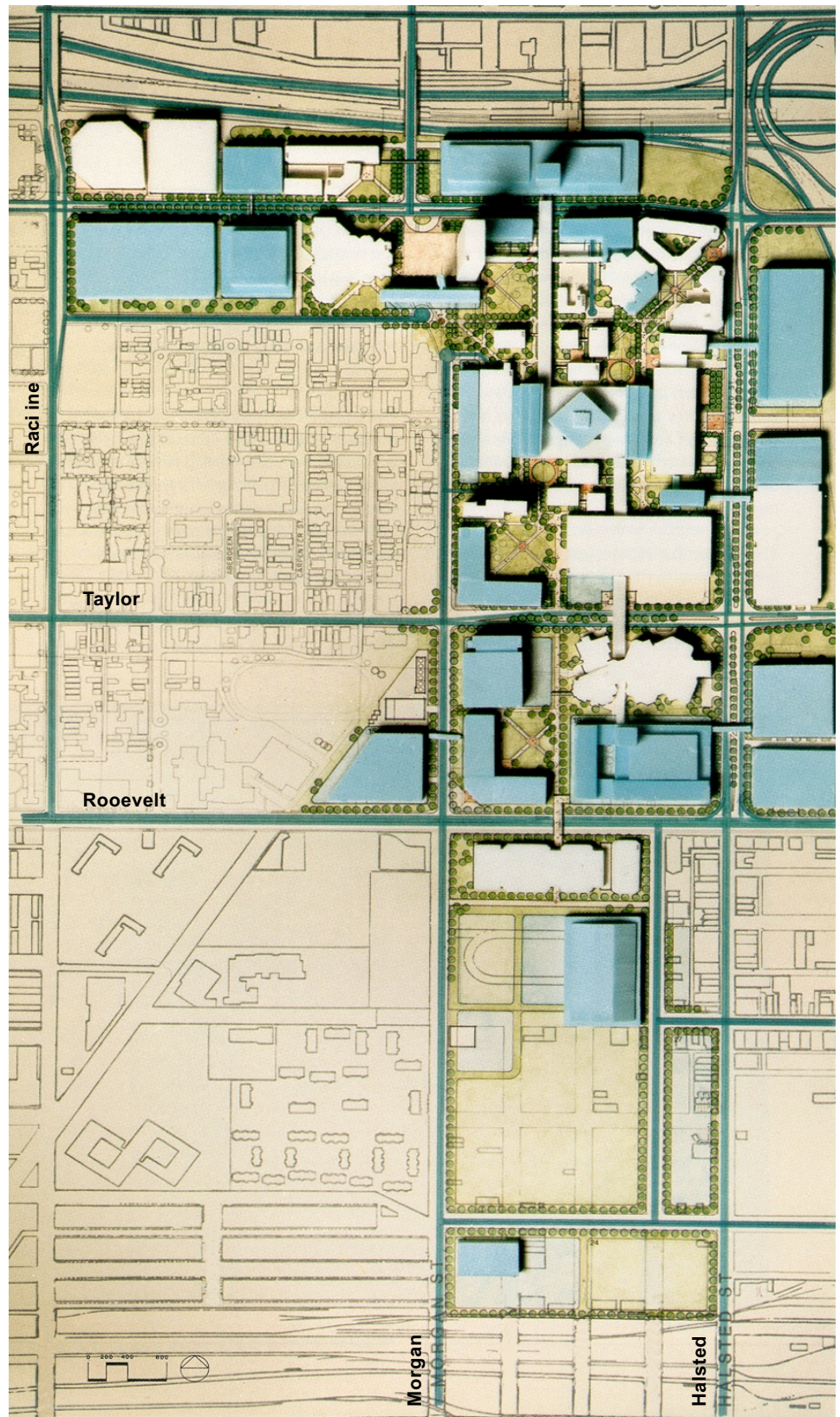


West Campus



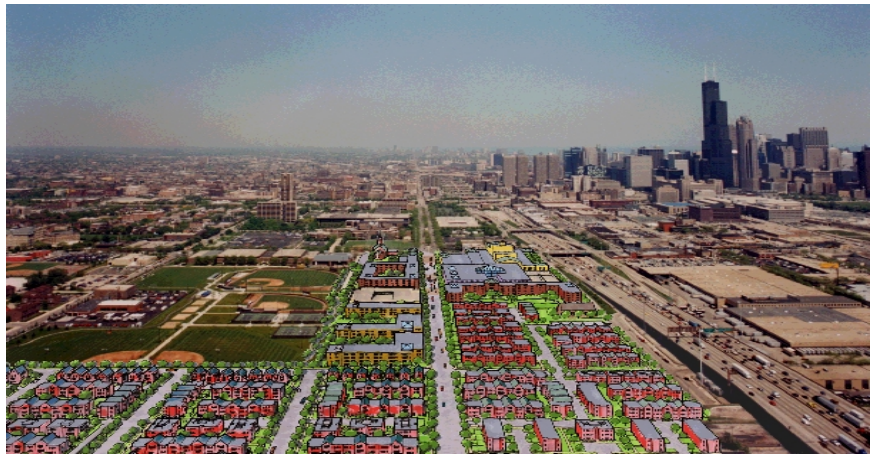
East Campus





UIC

Master Plan East Campus



This interactive planning process and development plan addresses new facilities that will equip the University to meet its academic objectives; new student housing to support the changing needs of the University's student population and create a vibrant community; and new housing for staff, faculty, and private residents.

*South Campus Development Team:
Mesirow Stein Real Estate, Inc.;
New Frontier Companies; The
Harlem Irving Companies; with
Wight & Company, Planning
Consultant*

